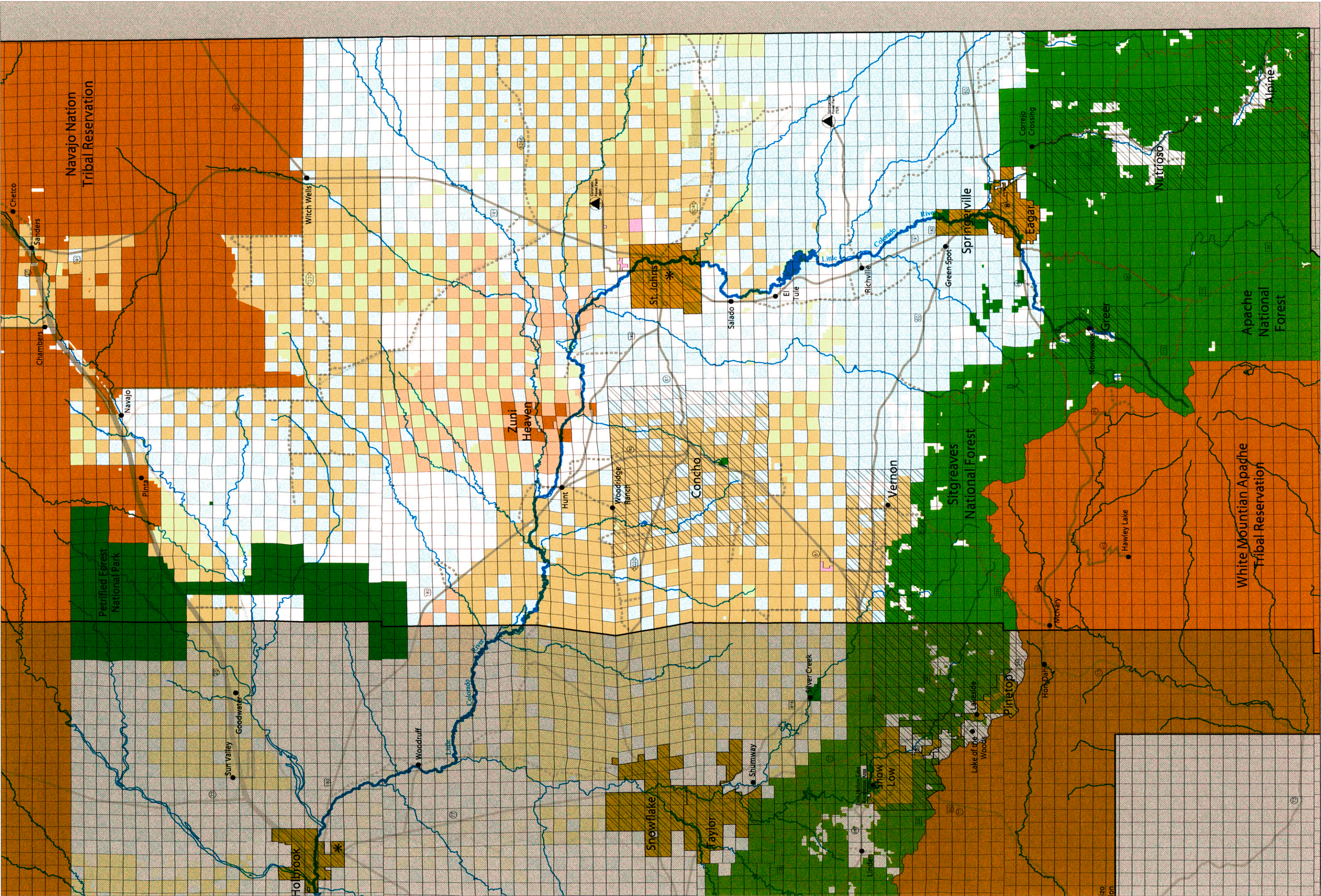


Apache County

Existing Conditions

- Tribal Land
- BLM Land
- State Land
- Private Land
- National Forest
- Petrified Forest National Park
- Wilderness Area
- Other
- Town Limits
- Subdivided Land
- Tribal Land (Fee)
- County Seat
- Planning Areas
- Major Transportation Route (Paved)
- Major Transportation Route (Unpaved)
- Minor Road
- Rail Line
- Airport
- Heloport
- Stream
- Power Plant



The drawings and information depicted herein are conceptual only and are not intended to represent final architecture, planning, or design concepts. We do not represent, warrant, or guarantee that such information is true or that it accurately reflects existing or future developments. Drawings and Specifications as instruments of service are the property of the architect and may not be reproduced or used for any purpose without the written permission of Expansio Lnc Incorporated.