



# Potter Mesa Energy Project

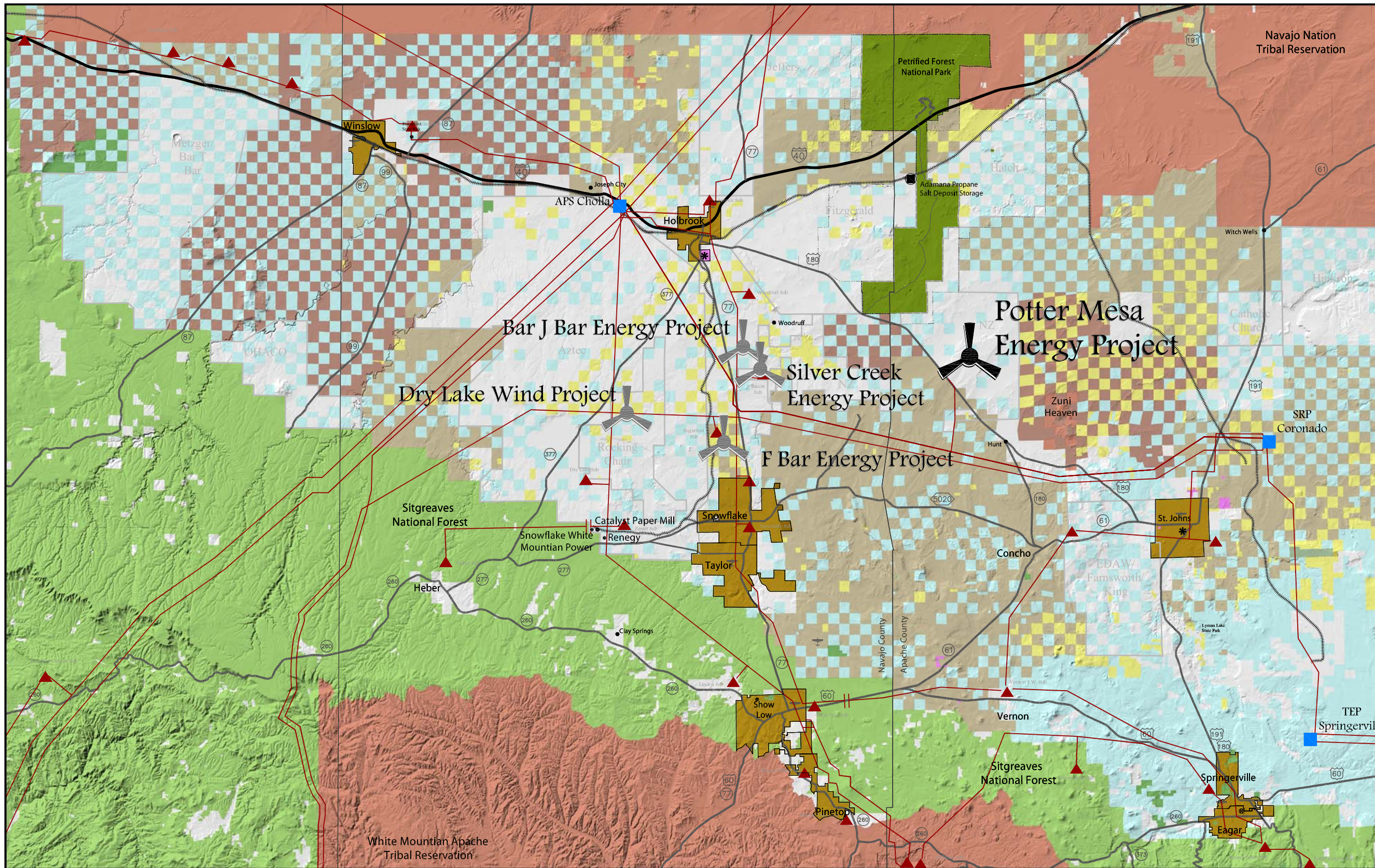
## Apache County Conditional Use Permit Application

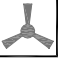














April 28, 2009





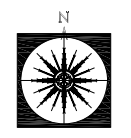
# Regional Context



-  Energy Project
-  Transmission Corridor
-  Substation
-  Power Plant
-  Town Limit
-  Tribal Land
-  Tribal Land (Fee)
-  BLM Land
-  State Land
-  Other
-  Subdivided Land
-  Private Land
-  National Forest
-  Petrified Forest National Park
-  Wilderness Area

Drawings and Specifications as instruments of service are the property of Espiritu Loci Incorporated and may not be reproduced or used for any purpose without the written permission of Espiritu Loci Incorporated. The drawings and information depicted hereon are conceptual only and are not intended to represent final architecture, planning, or design concepts. We do not represent, warrant, or guarantee that such information is true or that it accurately reflects existing or future development.

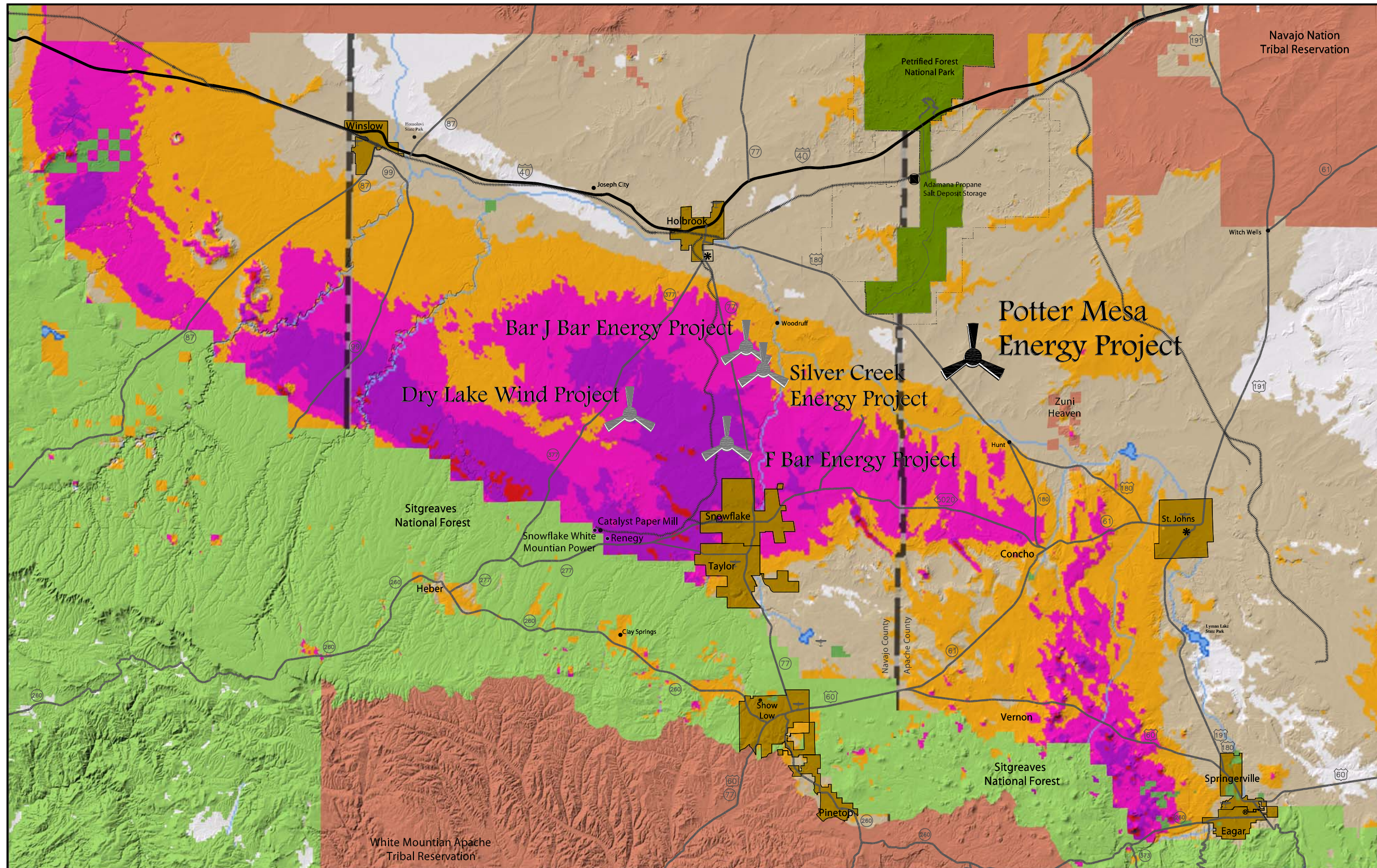
28 April 2009



N.T.S.







# 100m Average Annual Wind Resource



## Wind Power Classification

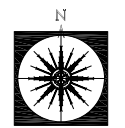
-  Poor
-  Marginal
-  Fair
-  Good
-  Excellent
-  Outstanding
-  Superb

(Source: NAU)

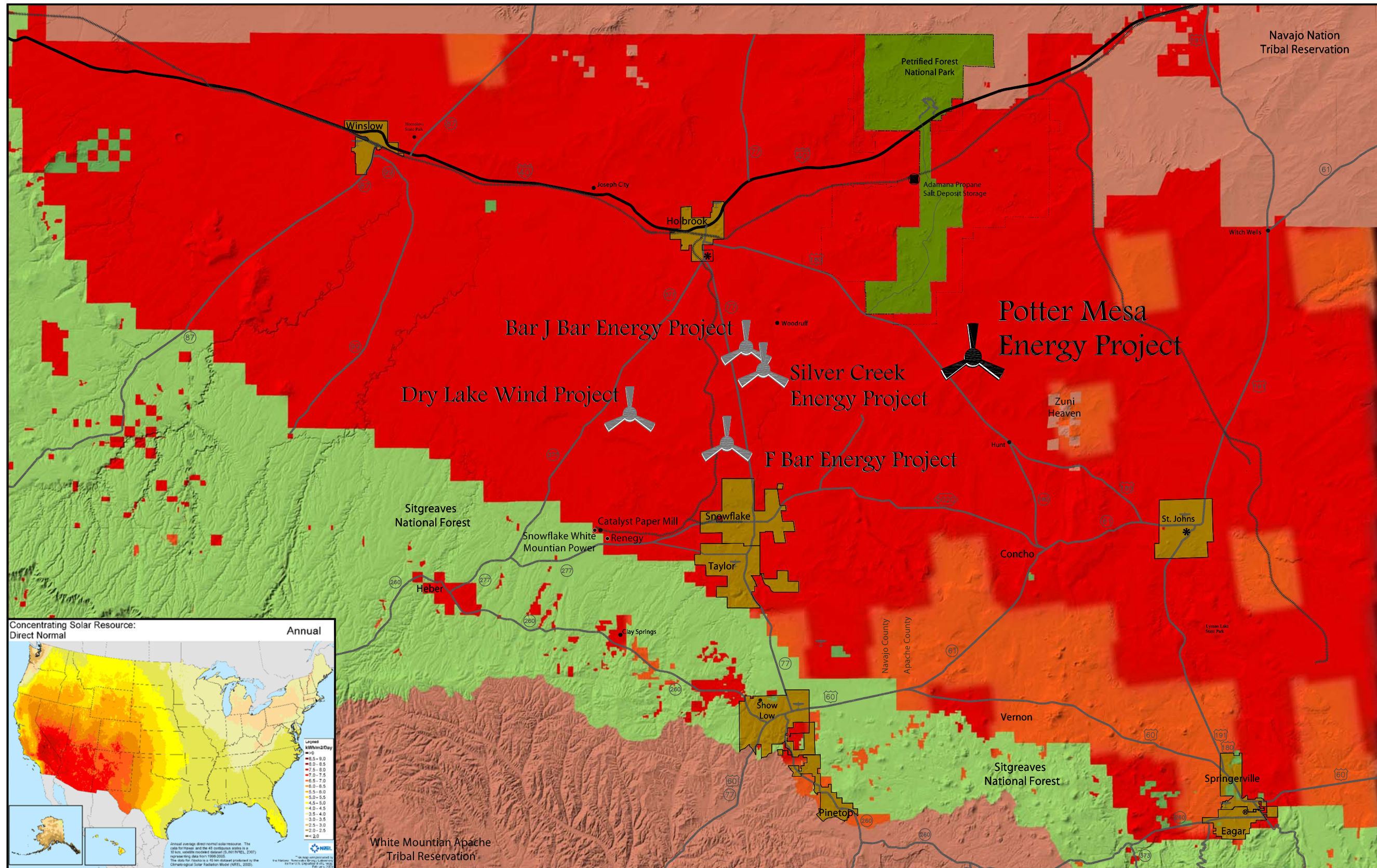
-  Tribal Land
-  National Forest
-  Petrified Forest National Park
-  Wilderness Area

Drawings and Specifications as instruments of service are the property of Espiritu Locí Incorporated and may not be reproduced or used for any purpose without the written permission of Espiritu Locí Incorporated. The drawings and information depicted hereon are conceptual only and are not intended to represent final architecture, planning, or design concepts. We do not represent, warrant, or guarantee that such information is true or that it accurately reflects existing or future development.

28 April 2009



# 100m Average Annual Wind Resource



kWh/m<sup>2</sup>/Day

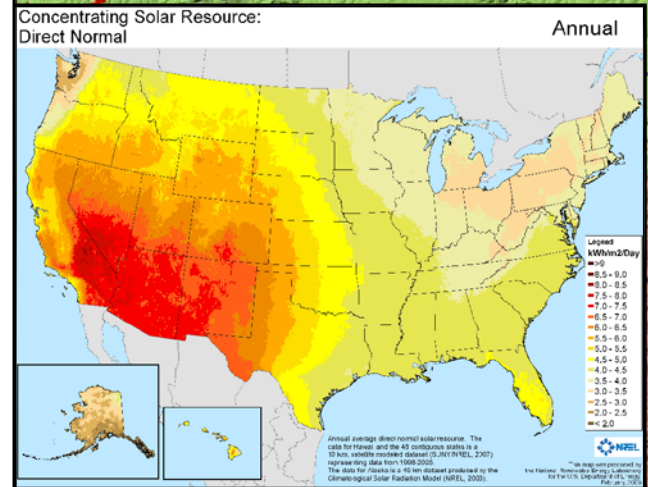
- 6.5 - 7.0
- 7.0 - 7.5

Source:  
National Renewable  
Energy Laboratory

- Tribal Land
- National Forest
- Petrified Forest National Park
- Wilderness Area

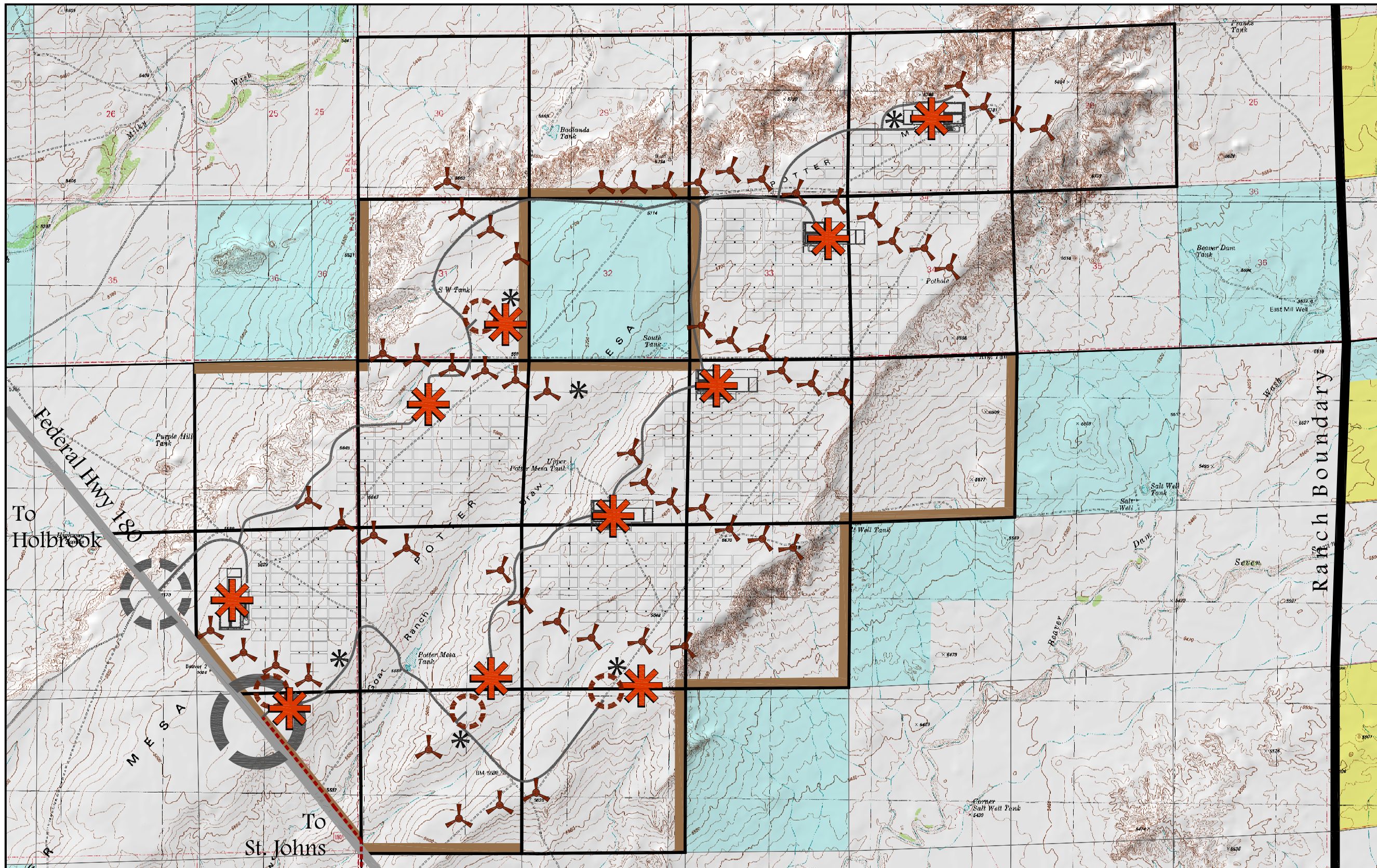
Drawings and Specifications as instruments of service are the property of Espiritu Loci Incorporated and may not be reproduced or used for any purpose without the written permission of Espiritu Loci Incorporated. The drawings and information depicted hereon are conceptual only and are not intended to represent final architecture, planning, or design concepts. We do not represent, warrant, or guarantee that such information is true or that it accurately reflects existing or future development.


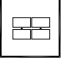








28 April 2009





# Conceptual Site Plan

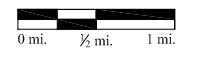
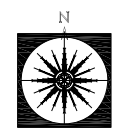


-  Proposed Wind Turbine  
Not to exceed 75 Wind Turbines
-  Concentrating Solar Power Mirrors and Towers  
Not to exceed 250 Solar Towers
-  Proposed Met. Tower  
Not to exceed 10
-  100m Tower Buffer
-  Proposed Operation and Maintenance Facility  
may include a 2,000 sf - 10,000 sf structure
-  Proposed Staging Area  
may include office facility
-  Primary Access Point
-  Secondary Access Point
-  Service Access  
Access to individual turbines generally to run parallel with Collector Line alignments
-  Proposed Transmission Line Corridor  
Alignment follows sections lines south approx. 6 miles to SRP 500kv Transmission Line

Wind Turbine, Concentrated Solar Power Mirror and Tower, and Met. Tower locations may alter for landforms, soils, rotor spacing, wind resource efficiency, solar resource efficiency, and infrastructure locations and costs. Collector lines between Wind Turbines, Wind Turbine rows, and Concentrated Solar Power will link to substations and transmission lines located on site and connect to the electric grid off site. 8' fence may surround Wind Turbine towers, mirror fields, substations, Operations and Maintenance Facilities, Staging Areas, and may be used to restrict Access Points. Mass grading may be required for installation of infrastructure and energy projects. Service Access may be asphalt, decomposed granite, or gravel. Other materials may be approved by the County.

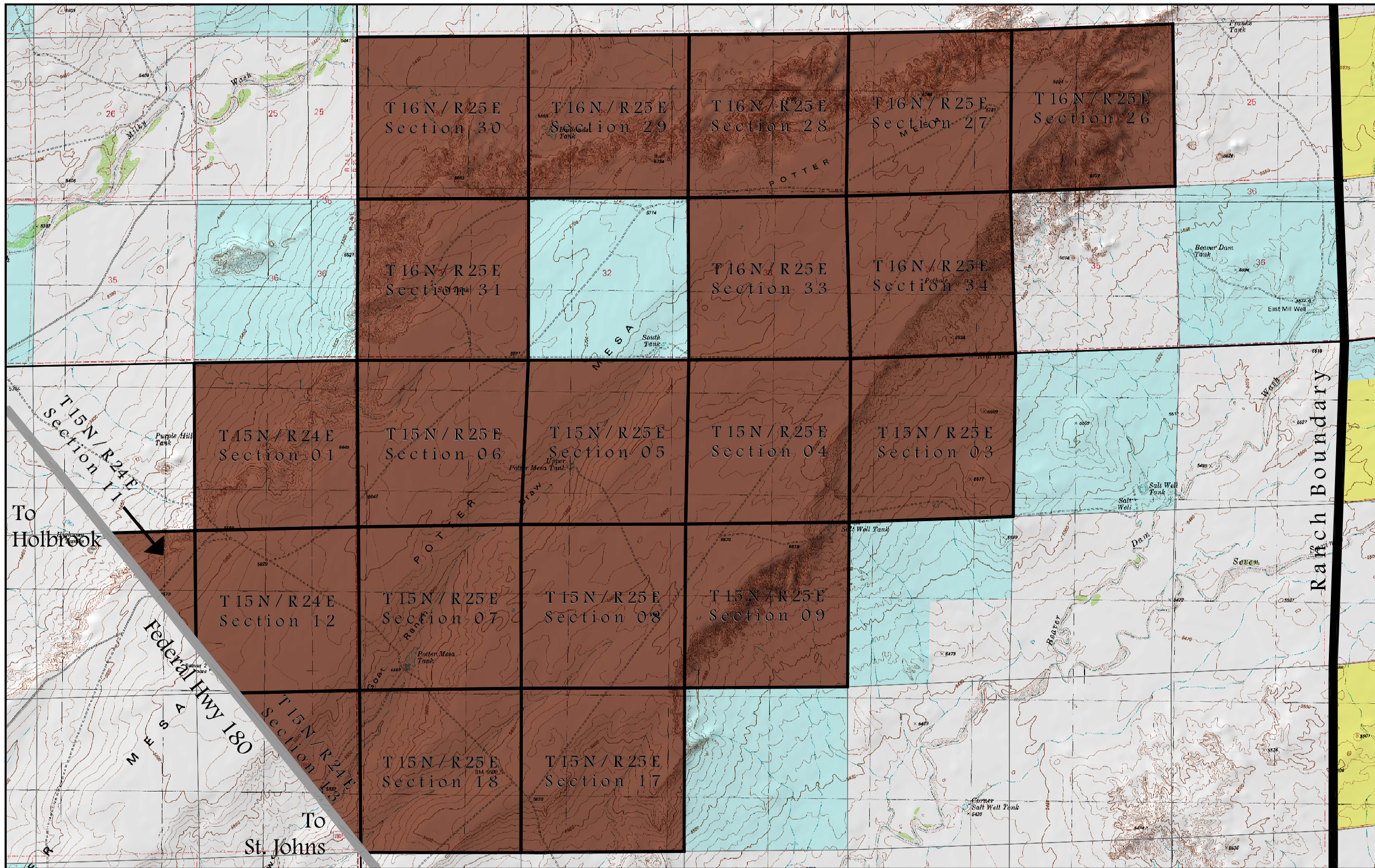
Drawings and Specifications as instruments of service are the property of Espiritu Loci Incorporated and may not be reproduced or used for any purpose without the written permission of Espiritu Loci Incorporated. The drawings and information depicted hereon are conceptual only and are not intended to represent final architecture, planning, or design concepts. We do not represent, warrant, or guarantee that such information is true or that it accurately reflects existing or future development.

28 APRIL 2009





# Conditional Use Permit Parcels

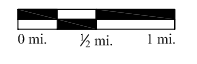
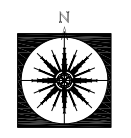


- Special Use Permit Parcel**  
 T 15 N - R 24 E  
 Section 01;  
 Section 11, 12, and 13  
 north of Federal Hwy 180  
 T 15 N - R 25 E  
 Section 03, 04, 05, 06, 07,  
 08, 09, 17, and 18  
 T 16 N - R 25 E  
 Section 26, 27, 28, 29, 30,  
 31, 33, and 34

- Private / Other Land
- BLM Land
- State Land

Drawings and Specifications as instruments of service are the property of Espiritu Loci Incorporated and may not be reproduced or used for any purpose without the written permission of Espiritu Loci Incorporated. The drawings and information depicted hereon are conceptual only and are not intended to represent final architecture, planning, or design concepts. We do not represent, warrant, or guarantee that such information is true or that it accurately reflects existing or future development.

28 APRIL 2009





For additional information or questions contact

Rulon Anderson  
rulon@realandconsulting.com  
602-321-4903

7 2 7 2 E I N D I A N S C H O O L R D  
S U I T E N U M B E R 4 7 2  
S C O T T S D A L E A R I Z O N A 8 5 2 5 1



W W W . E S P I R I T U L O C I . C O M  
P H O N E 4 8 0 - 4 8 1 - 9 1 0 0  
F A X 4 8 0 - 4 8 1 - 9 1 0 1

The drawings and information depicted hereon are conceptual only and are not intended to represent final architecture, planning, or design concepts. We do not represent, warrant, or guarantee that such information is true or that it accurately reflects existing or future development. Drawings and Specifications as instruments of service are the property of the Espiritu Loci Incorporated and may not be reproduced or used for any purpose without the written permission of Espiritu Loci Incorporated.