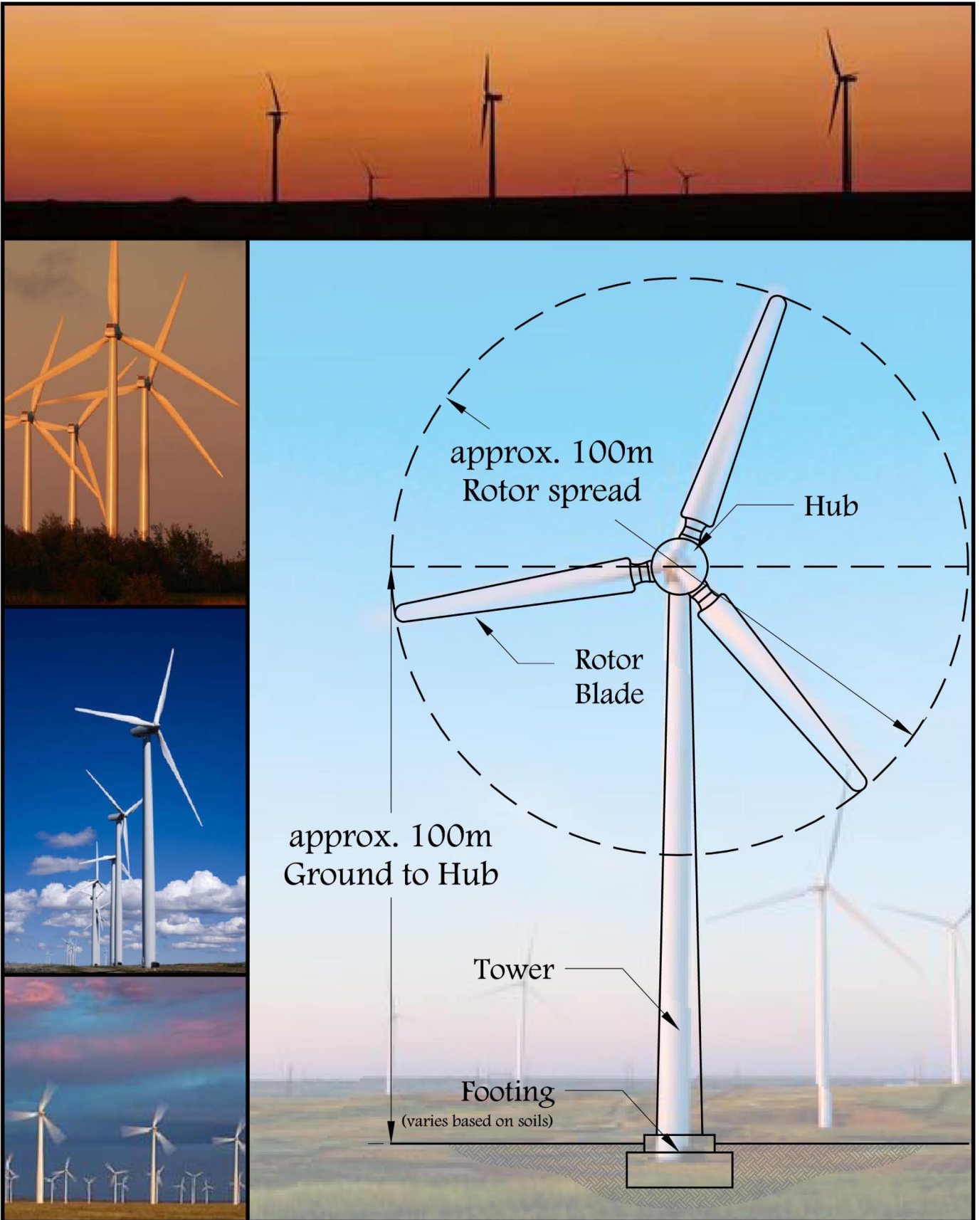


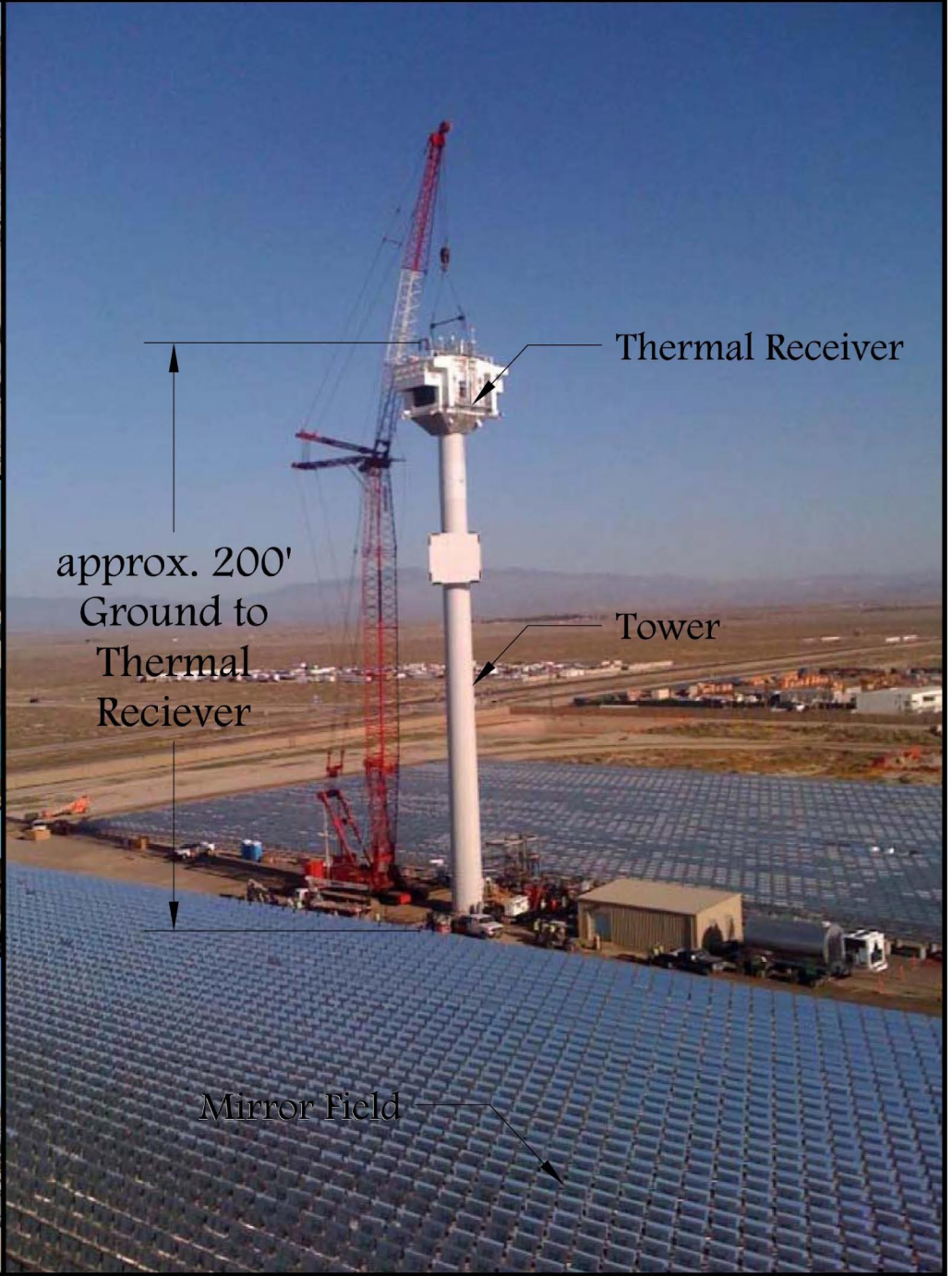


Potter Mesa Energy Project
28 April 2009

Wind Project Imagery



Solar Energy Imagery

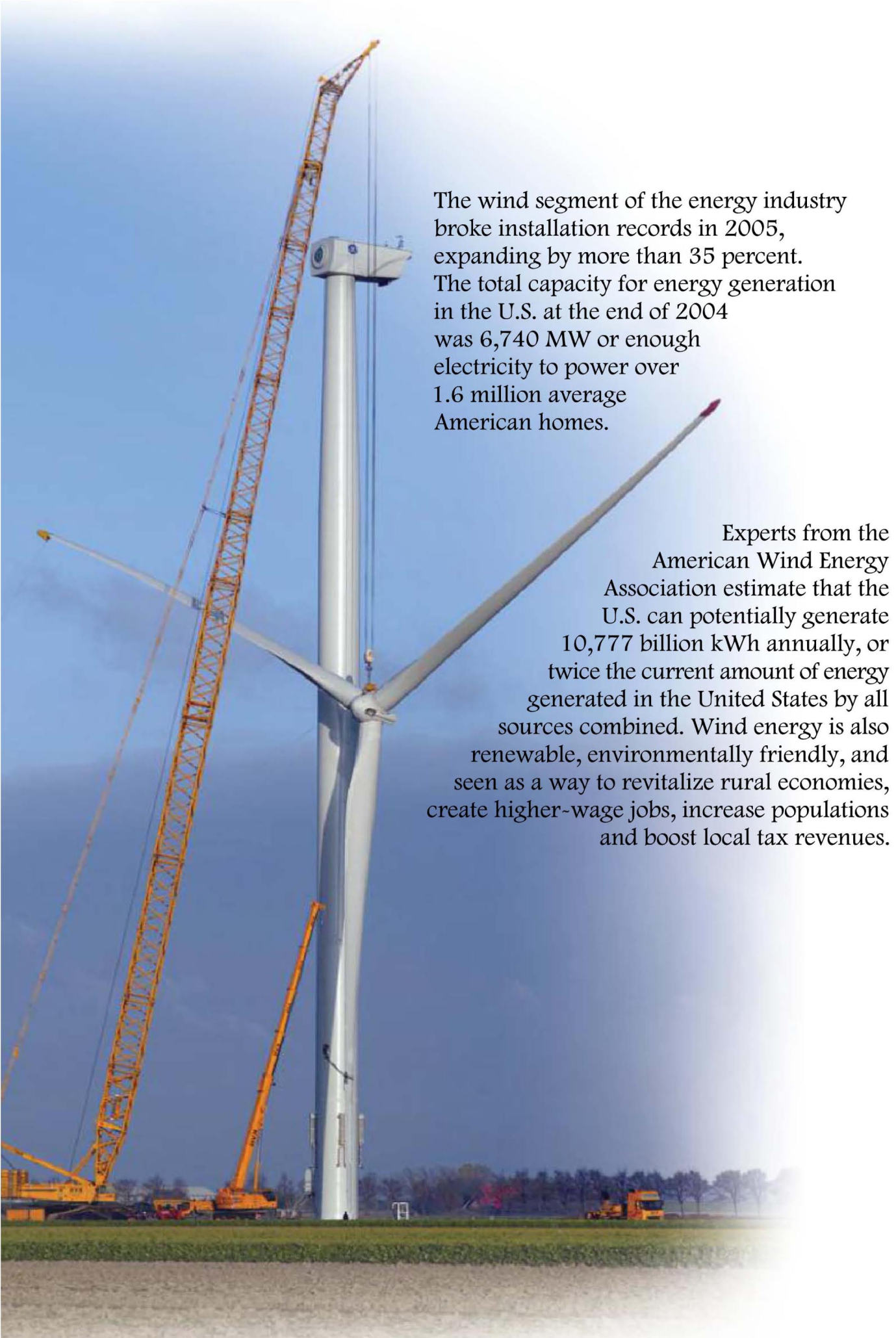


Thermal Receiver

approx. 200'
Ground to
Thermal
Receiver

Tower

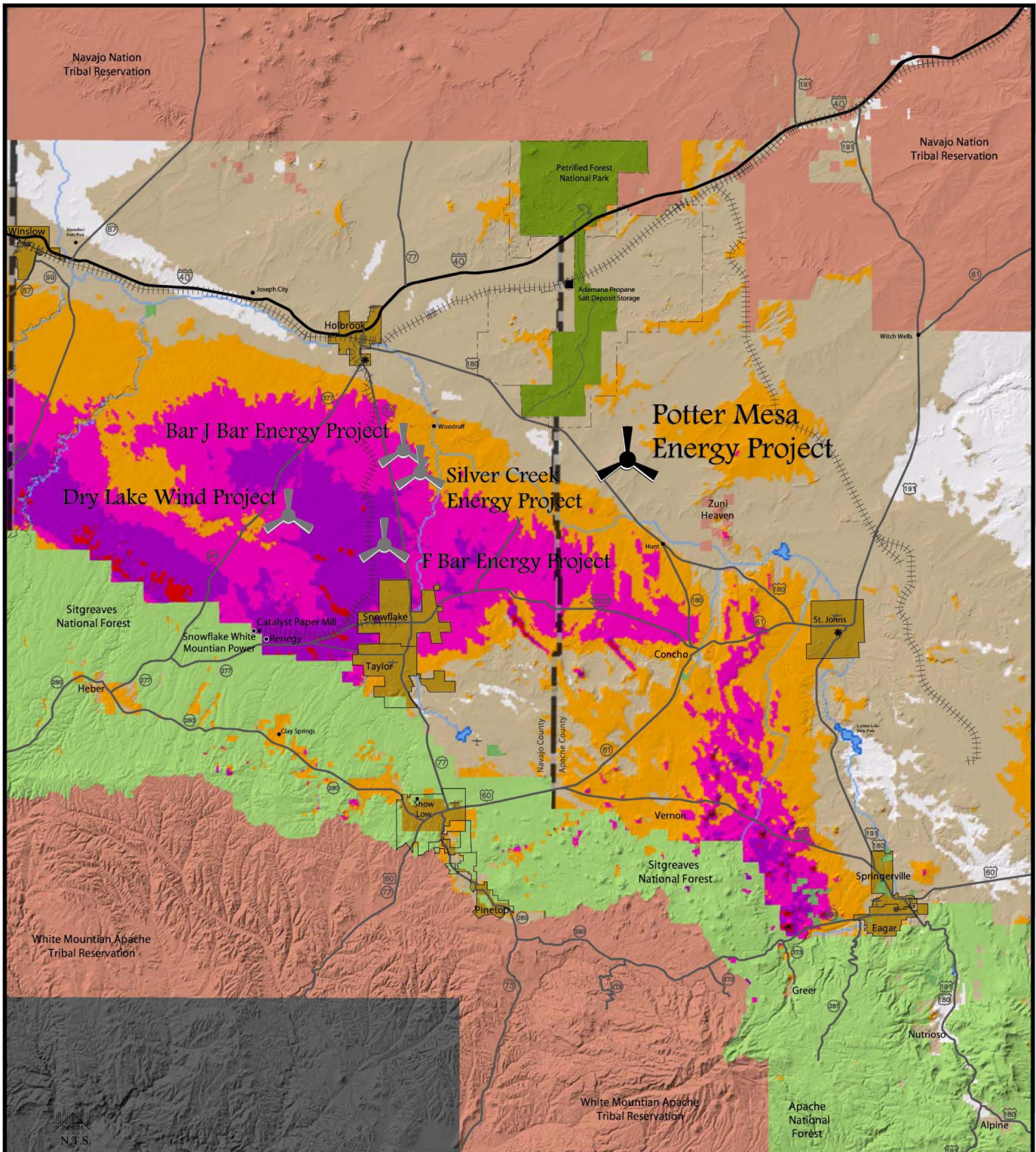
Mirror Field



The wind segment of the energy industry broke installation records in 2005, expanding by more than 35 percent. The total capacity for energy generation in the U.S. at the end of 2004 was 6,740 MW or enough electricity to power over 1.6 million average American homes.

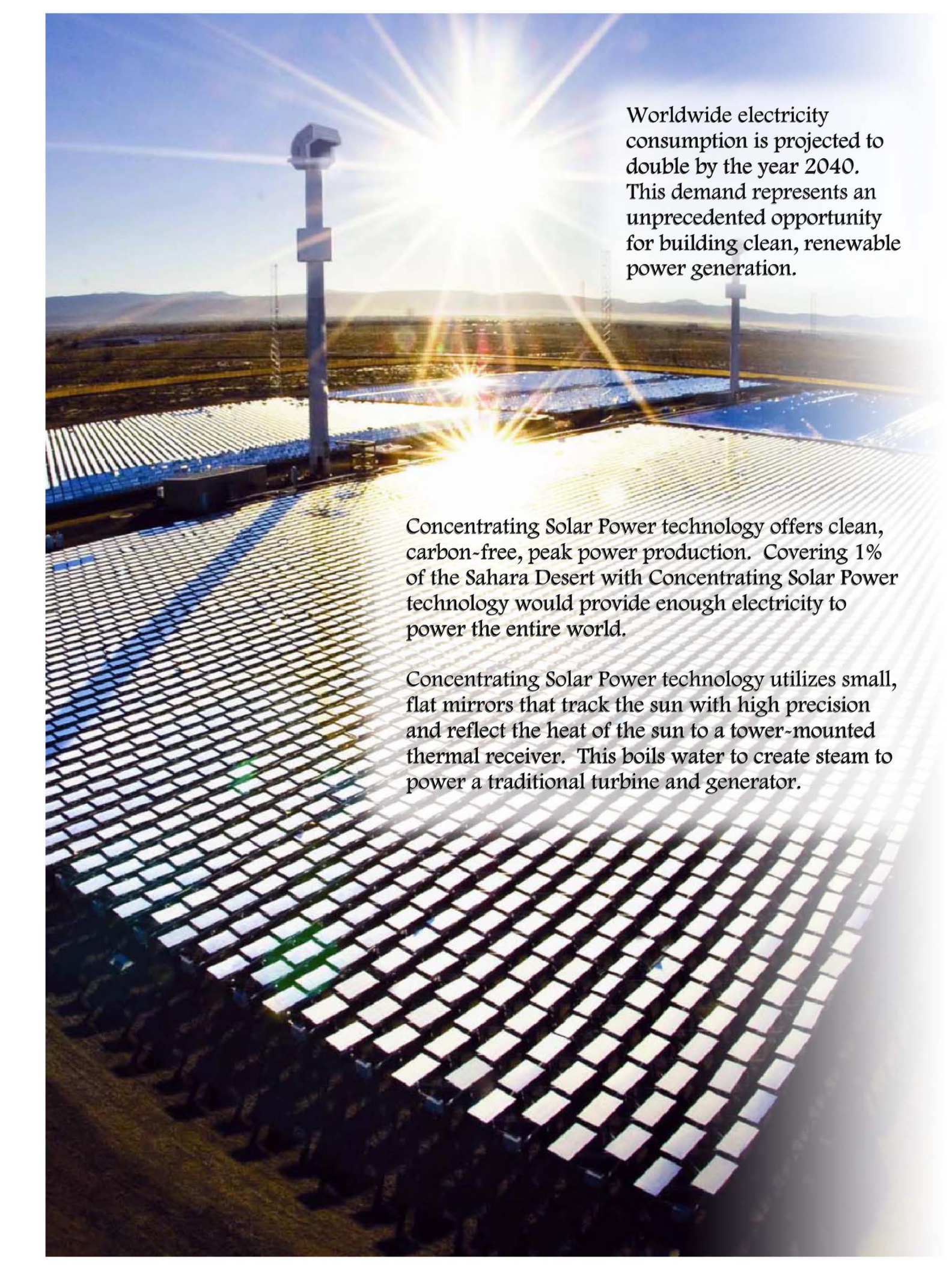
Experts from the American Wind Energy Association estimate that the U.S. can potentially generate 10,777 billion kWh annually, or twice the current amount of energy generated in the United States by all sources combined. Wind energy is also renewable, environmentally friendly, and seen as a way to revitalize rural economies, create higher-wage jobs, increase populations and boost local tax revenues.

100m Avg. Annual Wind Resource



Wind Power Classification

Source: Northern Arizona University

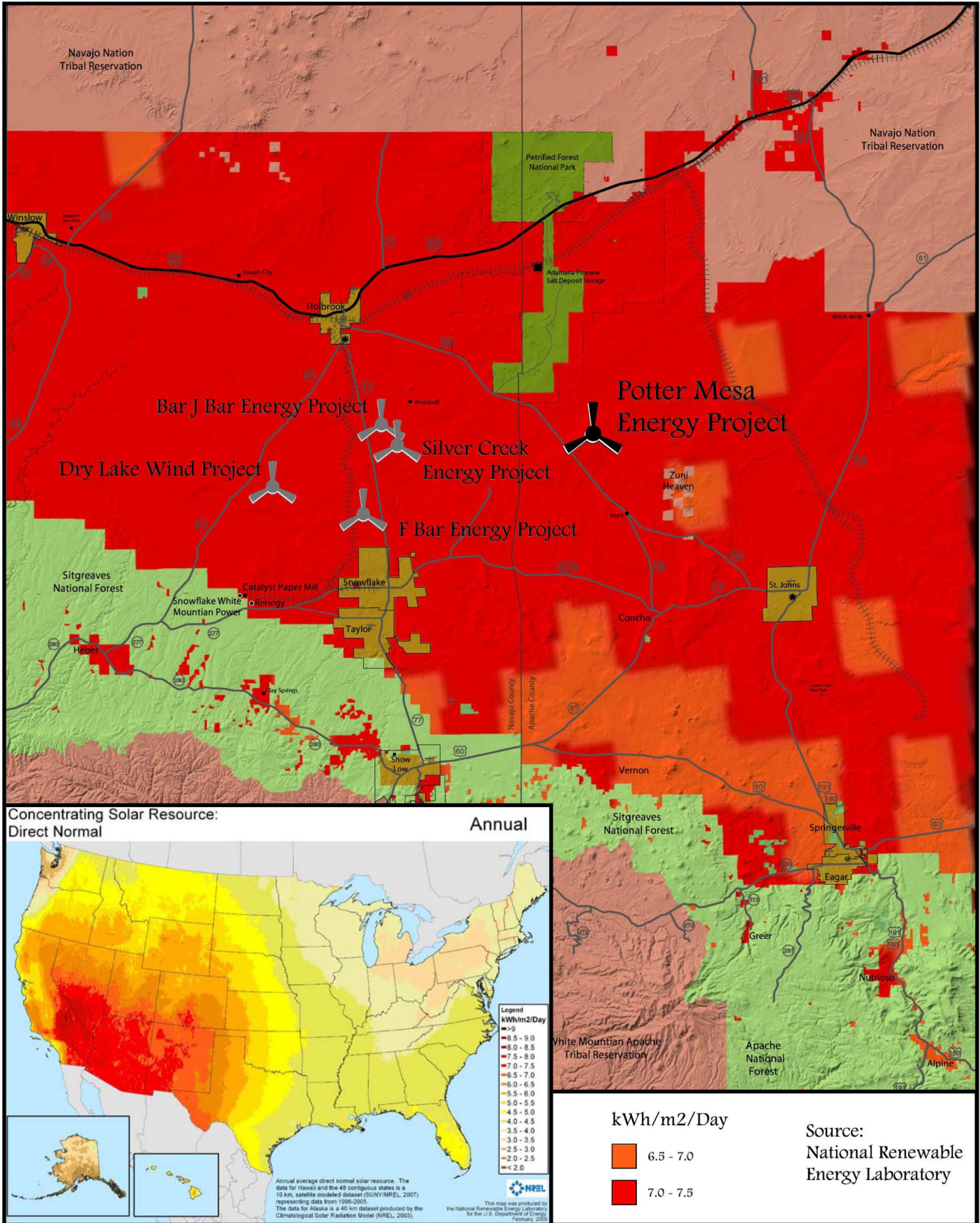

















Worldwide electricity consumption is projected to double by the year 2040. This demand represents an unprecedented opportunity for building clean, renewable power generation.

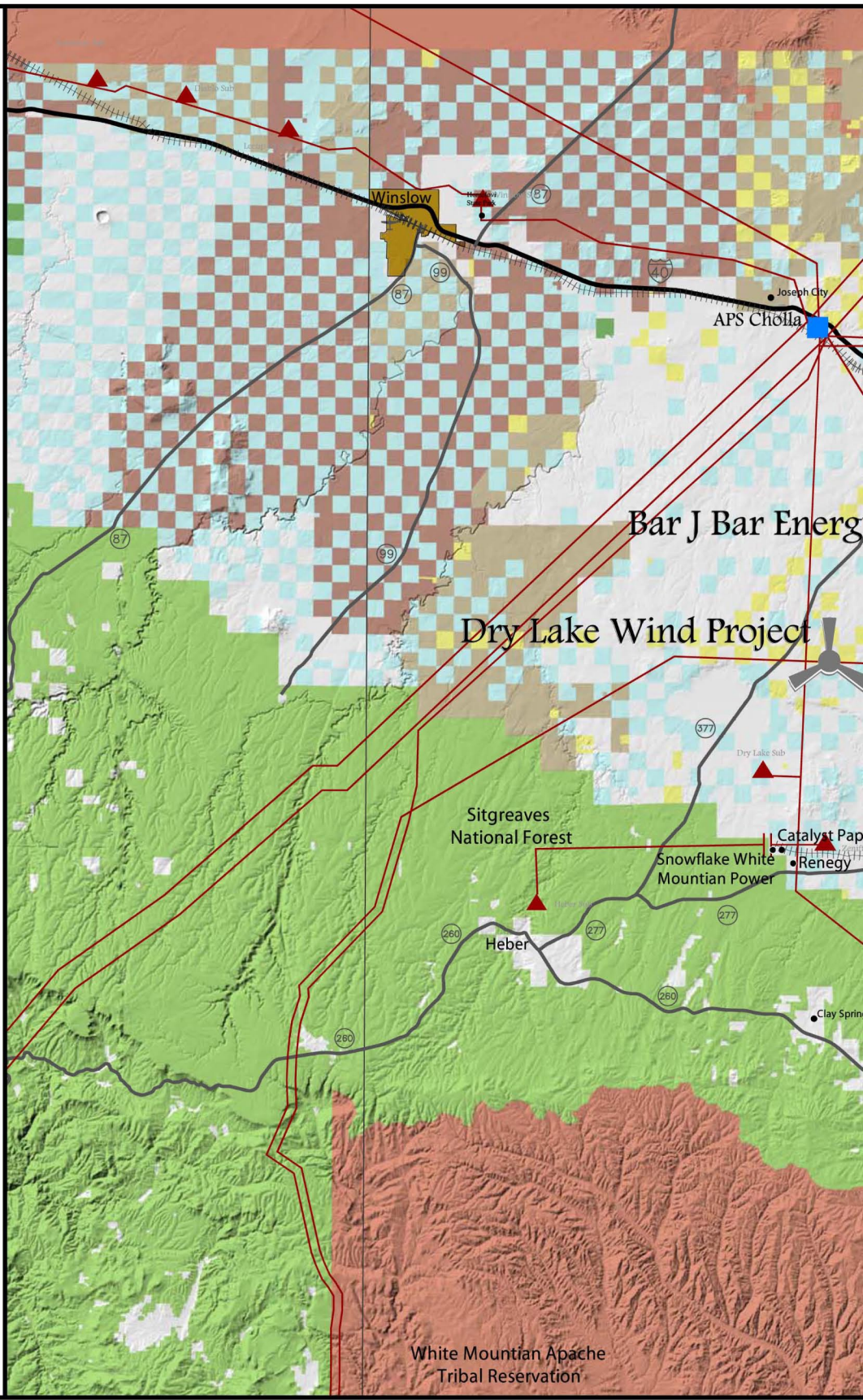
Concentrating Solar Power technology offers clean, carbon-free, peak power production. Covering 1% of the Sahara Desert with Concentrating Solar Power technology would provide enough electricity to power the entire world.

Concentrating Solar Power technology utilizes small, flat mirrors that track the sun with high precision and reflect the heat of the sun to a tower-mounted thermal receiver. This boils water to create steam to power a traditional turbine and generator.

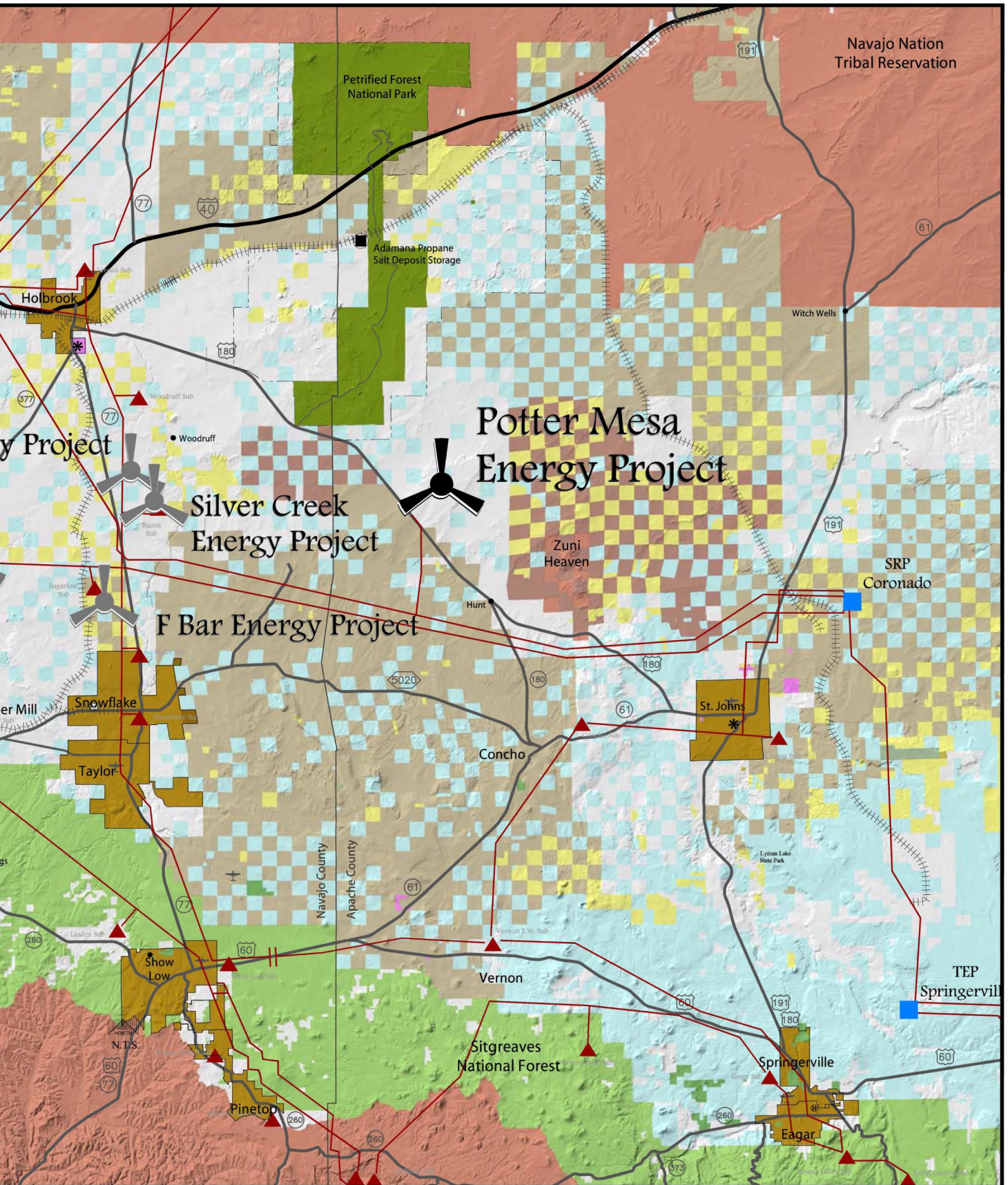
Annual Concentrating Solar Resource



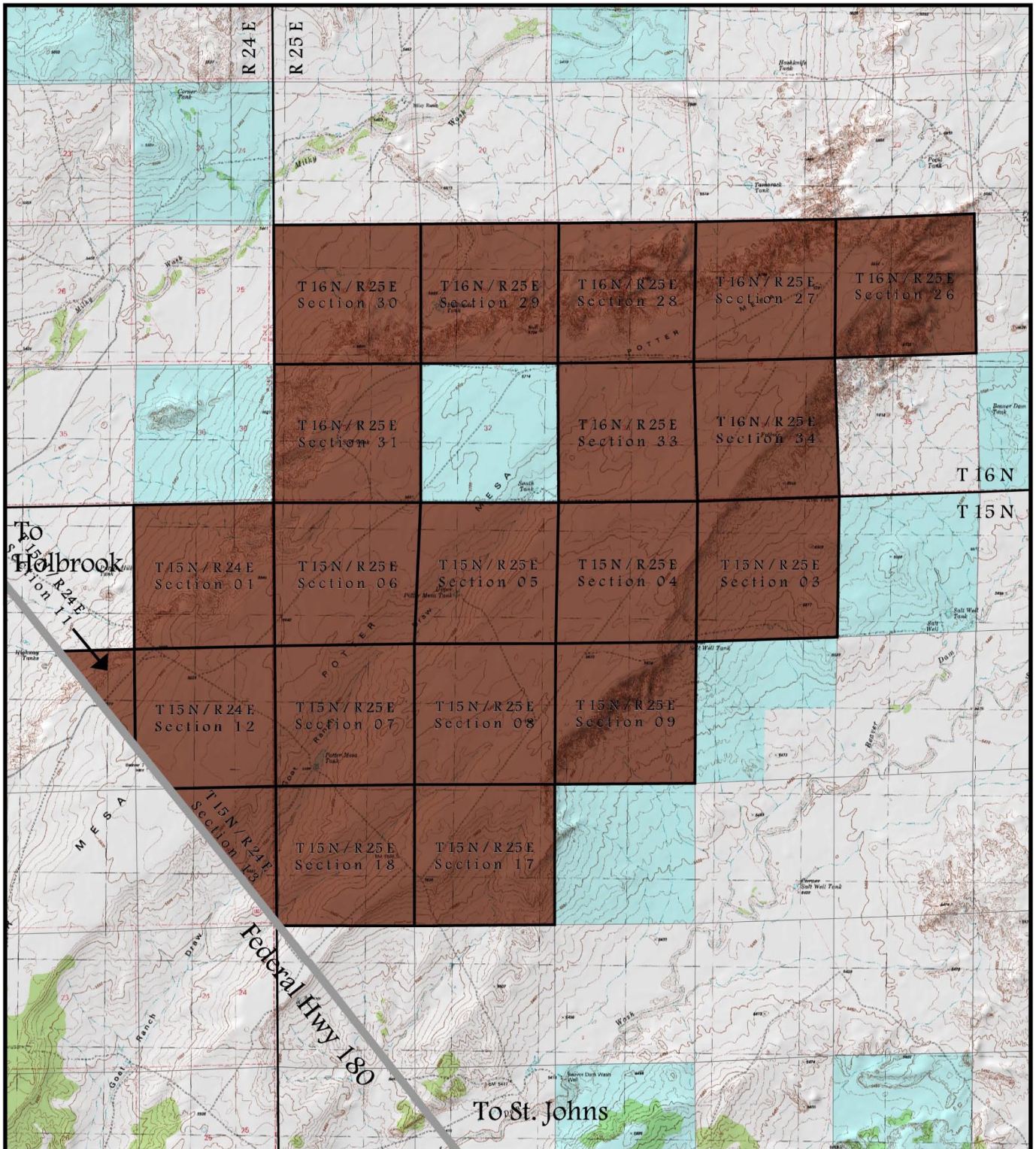
-  Energy Project
-  Transmission Corridor
-  Substation
-  Power Plant
-  Town Limit
-  Tribal Land
-  Tribal Land (Fee)
-  BLM Land
-  State Land
-  Other
-  Subdivided Land
-  Private Land
-  National Forest
-  Petrified Forest National Park
-  Wilderness Area



Regional Context



Conditional Use Permit Parcels



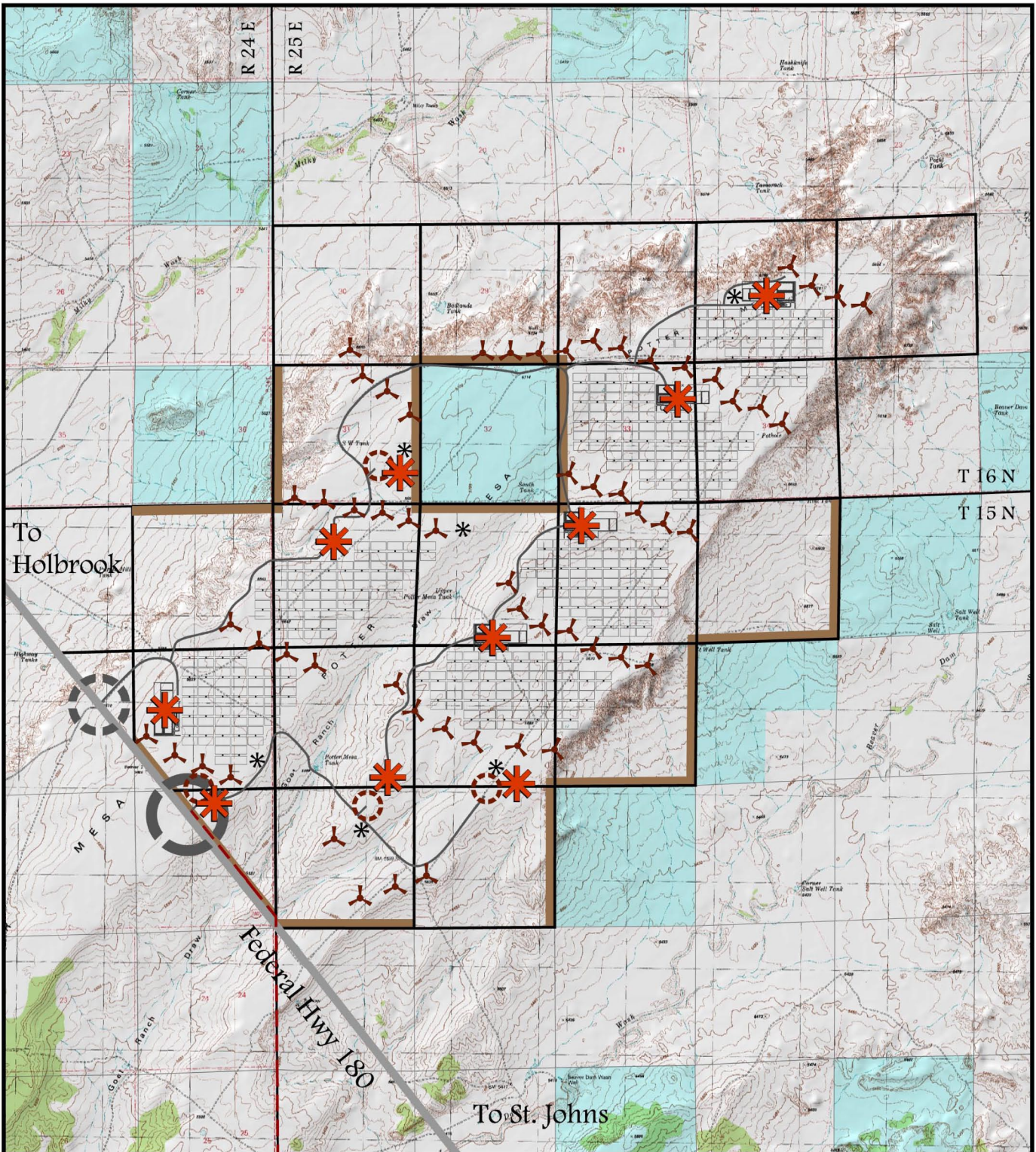
Special Use Permit Parcel
 T 15 N - R 24 E
 Section 01,
 Section 11, 12, and 13
 north of Federal Hwy 180

T 15 N - R 25 E
 Section 03, 04, 05, 06, 07,
 08, 09, 17, and 18
 T 16 N - R 25 E
 Section 26, 27, 28, 29, 30,
 31, 33, and 34

Wind Turbine, Concentrated Solar Power Mirror and Tower, and Met. Tower locations may alter for landforms, soils, rotor spacing, wind resource efficiency, solar resource efficiency, and infrastructure locations and costs. Collector lines between Wind Turbines, Wind Turbine rows, and Concentrated Solar Power will link to substations and transmission lines located on site and connect to the electric grid off site. 8' fence may surround Wind Turbine towers, mirror fields, substations, Operations and Maintenance Facilities, Staging Areas, and may be used to restrict Access Points. Mass grading may be required for installation of infrastructure and energy projects. Service Access may be asphalt, decomposed granite, or gravel. Other materials may be approved by the County.

Private / Other Land
 State Land
 BLM Land

Conceptual Site Plan



- | | | | | |
|----------------------|--------------------------------|------------------------|---|------------------------------------|
| Private / Other Land | Proposed Transmission Corridor | Primary Access Point | 100m Tower Buffer | Proposed Wind Turbine |
| State Land | Substation | Secondary Access Point | Proposed Operation and Maintenance Facility | Proposed Concentrating Solar Power |
| BLM Land | Power Plant | Service Access | Proposed Staging Area | Proposed Met. Tower |



For additional information or questions contact

Rulon Anderson
rulon@realandconsulting.com
602-321-4903

7 2 7 2 E I N D I A N S C H O O L R D
S U I T E N U M B E R 4 7 2
S C O T T S D A L E A R I Z O N A 8 5 2 5 1



W W W . E S P I R I T U L O C I . C O M
P H O N E 4 8 0 - 4 8 1 - 9 1 0 0
F A X 4 8 0 - 4 8 1 - 9 1 0 1

The drawings and information depicted hereon are conceptual only and are not intended to represent final architecture, planning, or design concepts. We do not represent, warrant, or guarantee that such information is true or that it accurately reflects existing or future development. Drawings and Specifications as instruments of service are the property of the Espiritu Loci Incorporated and may not be reproduced or used for any purpose without the written permission of Espiritu Loci Incorporated.