



# Hay Hollow Energy Project

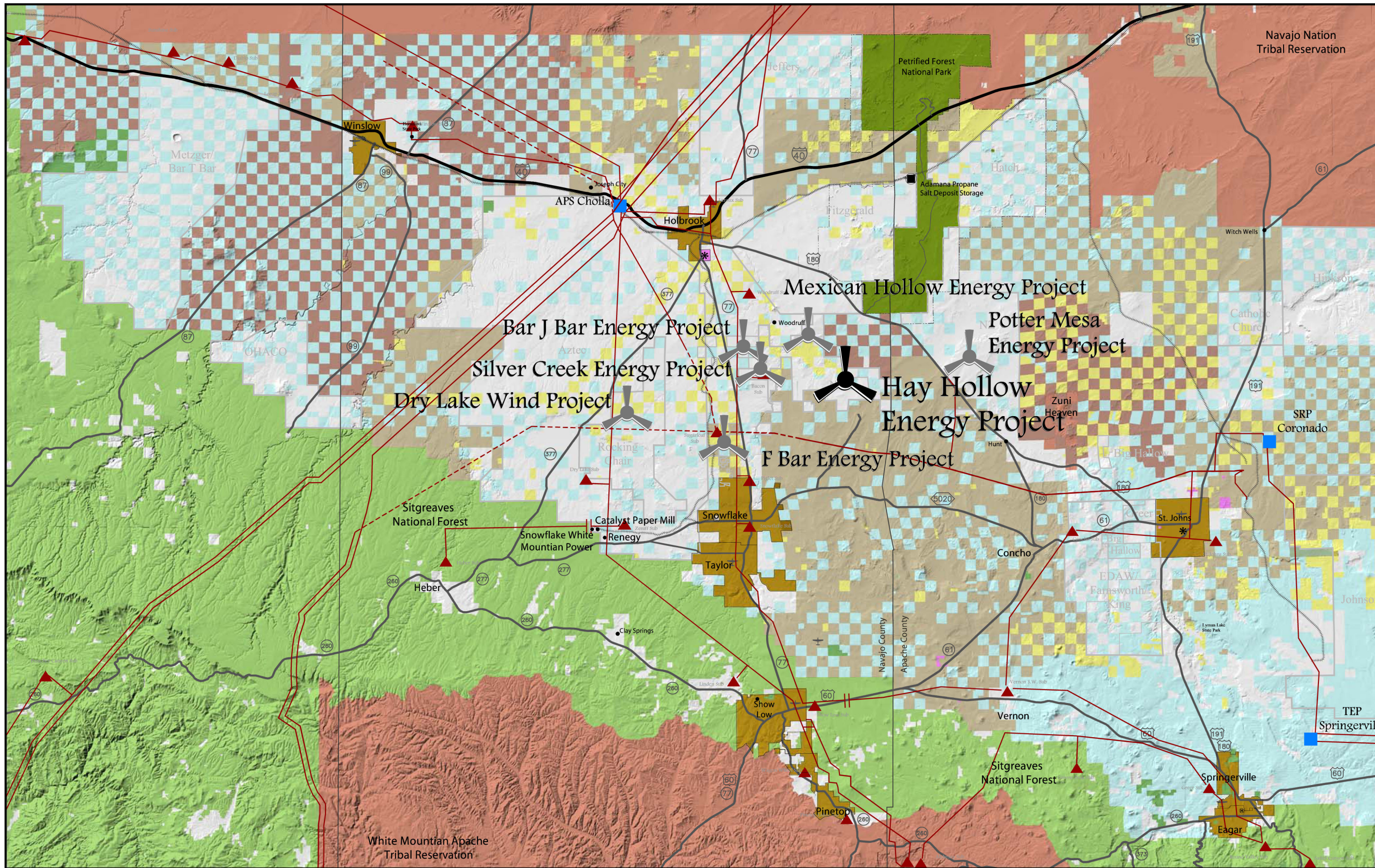
## Special Use Permit Application








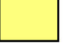







May 08, 2009





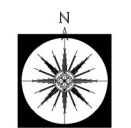
# Regional Context



-  Energy Project
-  Transmission Corridor
-  Substation
-  Power Plant
-  Town Limit
-  Tribal Land
-  Tribal Land (Fee)
-  BLM Land
-  State Land
-  Other
-  Subdivided Land
-  Private Land
-  National Forest
-  Petrified Forest National Park
-  Wilderness Area

Drawings and Specifications as instruments of service are the property of Espiritu Locí Incorporated and may not be reproduced or used for any purpose without the written permission of Espiritu Locí Incorporated. The drawings and information depicted hereon are conceptual only and are not intended to represent final architecture, planning, or design concepts. We do not represent, warrant, or guarantee that such information is true or that it accurately reflects existing or future development.

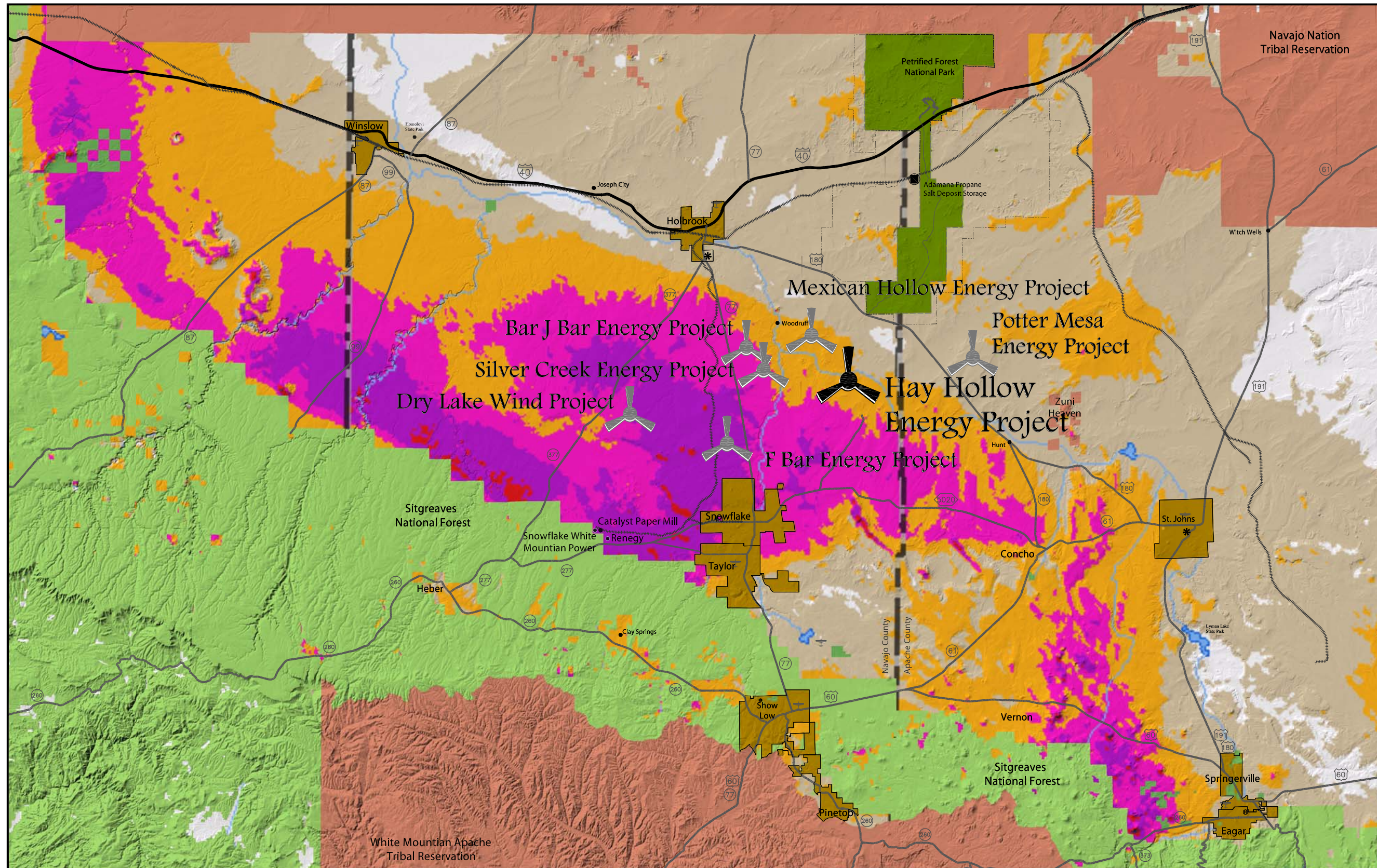
08 MAY 2009



N.T.S.



# 100m Average Annual Wind Resource



## Wind Power Classification

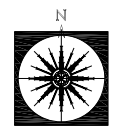
- Poor
- Marginal
- Fair
- Good
- Excellent
- Outstanding
- Superb

(Source: NAU)

- Tribal Land
- National Forest
- Petrified Forest National Park
- Wilderness Area

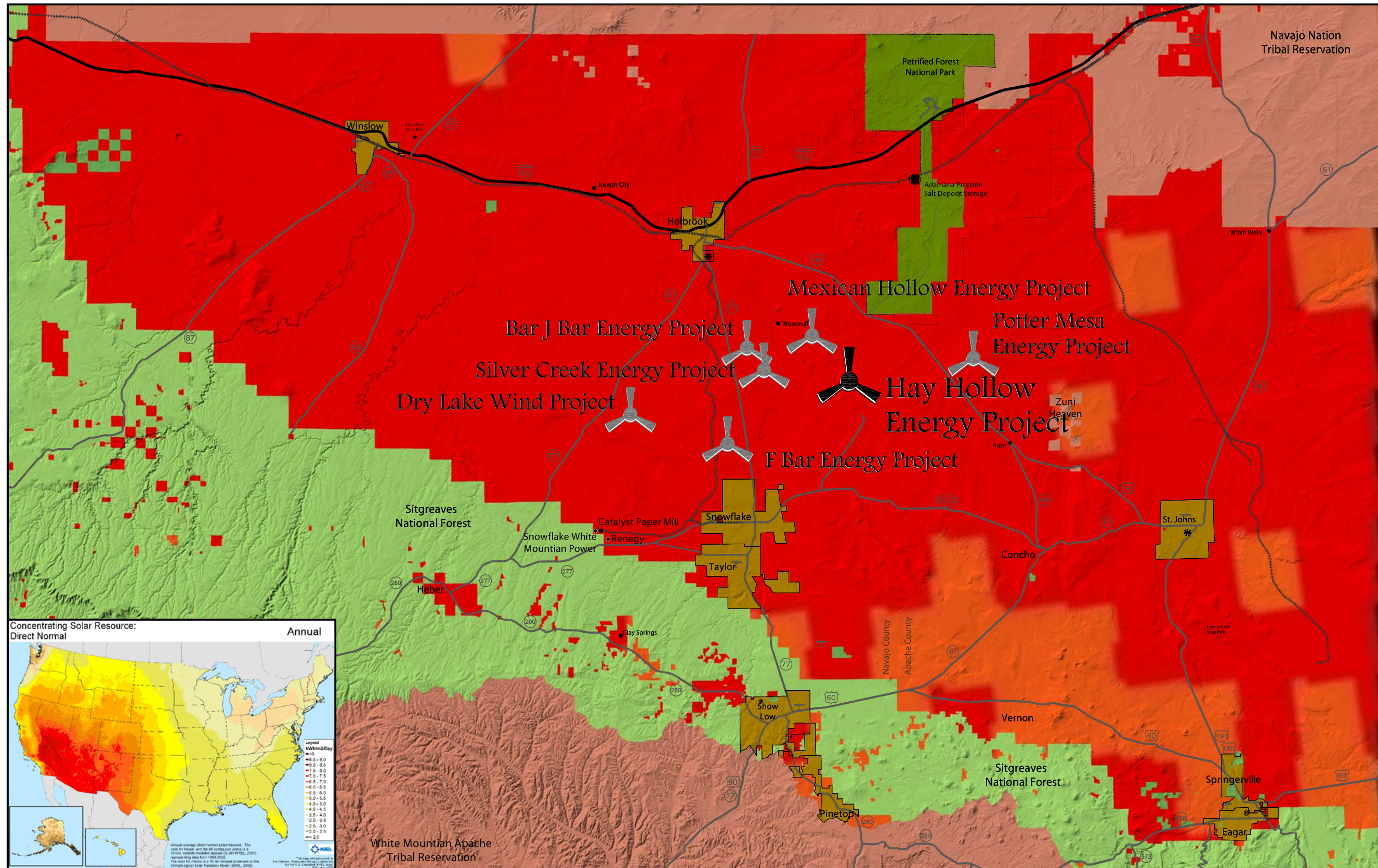
Drawings and Specifications as instruments of service are the property of Espiritu Locí Incorporated and may not be reproduced or used for any purpose without the written permission of Espiritu Locí Incorporated. The drawings and information depicted hereon are conceptual only and are not intended to represent final architecture, planning, or design concepts. We do not represent, warrant, or guarantee that such information is true or that it accurately reflects existing or future development.

08 MAY 2009

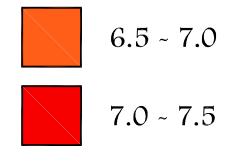




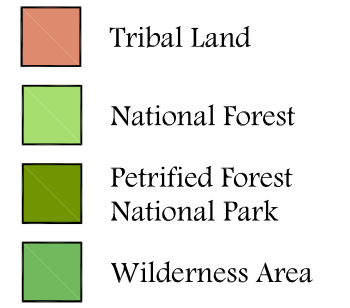
# Annual Concentrating Solar Resource



kWh/m2/Day

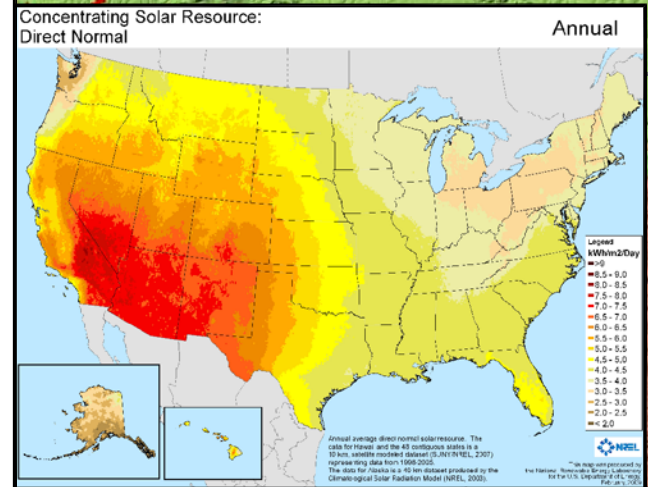
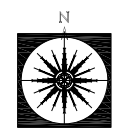


Source:  
National Renewable  
Energy Laboratory



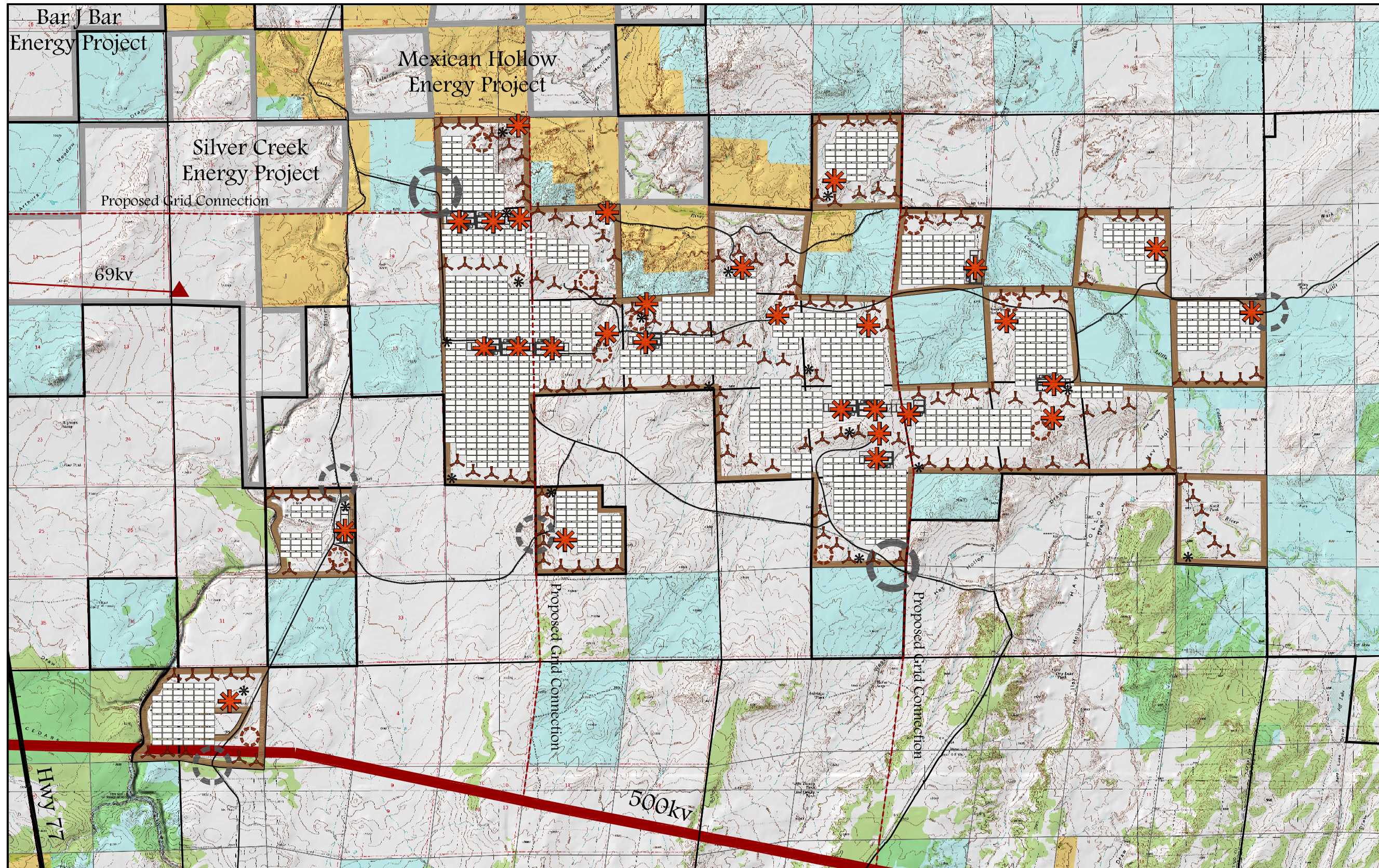
Drawings and Specifications as instruments of service are the property of Espiritu Locí Incorporated and may not be reproduced or used for any purpose without the written permission of Espiritu Locí Incorporated. The drawings and information depicted hereon are conceptual only and are not intended to represent final architecture, planning, or design concepts. We do not represent, warrant, or guarantee that such information is true or that it accurately reflects existing or future development.

08 MAY 2009





# Conceptual Site Plan

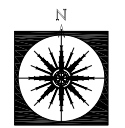


-  Proposed Wind Turbine  
Not to exceed 180 Wind Turbines
-  Concentrating Solar Power Mirrors and Towers  
Not to exceed 675 Solar Towers
-  Proposed Met. Tower  
Not to exceed 10
-  100m Tower Buffer
-  Proposed Operation and Maintenance Facility  
may include a 2,000 sf - 10,000 sf structure
-  Proposed Staging Area  
may include office facility
-  Primary Access Point
-  Secondary Access Point
-  Service Access  
Access to individual turbines generally to run parallel with Collector Line alignments
-  Transmission Line (Existing)
-  Bacon Substation

Wind Turbine, Concentrated Solar Power Mirror and Tower, and Met. Tower locations may alter for landforms, soils, rotor spacing, wind resource efficiency, solar resource efficiency, and infrastructure locations and costs. Collector lines between Wind Turbines, Wind Turbine rows, and Concentrated Solar Power will link to substations and transmission lines located on site and connect to the electric grid off site. 8' fence may surround Wind Turbine towers, mirror fields, substations, Operations and Maintenance Facilities, Staging Areas, and may be used to restrict Access Points. Mass grading may be required for installation of infrastructure and energy projects. Service Access may be asphalt, decomposed granite, or gravel. Other materials may be approved by the County.

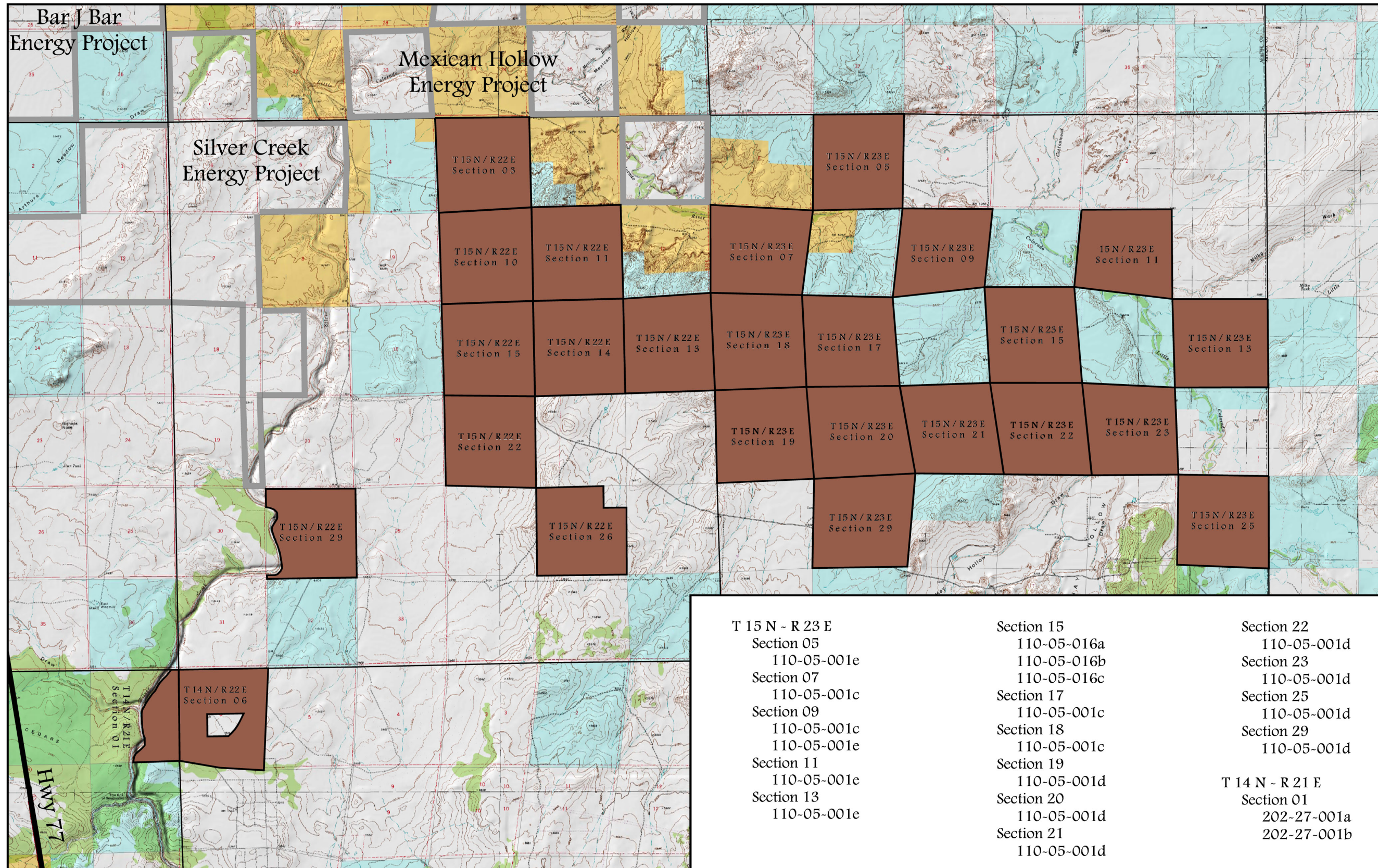
Drawings and Specifications as instruments of service are the property of Espiritu Loci Incorporated and may not be reproduced or used for any purpose without the written permission of Espiritu Loci Incorporated. The drawings and information depicted hereon are conceptual only and are not intended to represent final architecture, planning, or design concepts. We do not represent, warrant, or guarantee that such information is true or that it accurately reflects existing or future development.

08 MAY 2009





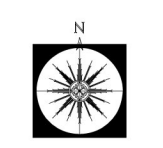
# Special Use Permit Parcels



- Special Use Permit Parcel
- T 14 N - R 22 E
  - Section 06
    - 303-10-011a
    - 303-10-011b
- T 15 N - R 22 E
  - Section 03
    - 110-04-009
  - Section 10
    - 110-04-009
  - Section 11
    - 110-04-009
  - Section 13
    - 110-04-008
  - Section 14
    - 110-04-002e
  - Section 15
    - 110-04-002e
  - Section 22
    - 110-04-002h
  - Section 26
    - 110-04-002h
    - 110-04-002j
  - Section 29
    - 110-04-002e
- Private / Other Land
- BLM Land
- State Land

Drawings and Specifications as instruments of service are the property of Espiritu Loci Incorporated and may not be reproduced or used for any purpose without the written permission of Espiritu Loci Incorporated. The drawings and information depicted hereon are conceptual only and are not intended to represent final architecture, planning, or design concepts. We do not represent, warrant, or guarantee that such information is true or that it accurately reflects existing or future development.

08 MAY 2009



T 15 N - R 23 E	Section 15	Section 22
Section 05	110-05-016a	110-05-001d
Section 07	110-05-001e	Section 23
Section 09	110-05-001c	110-05-001d
Section 11	110-05-001c	Section 25
Section 13	110-05-001e	110-05-001d
Section 15	110-05-001c	Section 29
Section 17	110-05-001c	110-05-001d
Section 18	110-05-001d	
Section 19	110-05-001d	
Section 20	110-05-001d	
Section 21	110-05-001d	
Section 22	110-05-001d	
Section 23		
Section 25		
Section 26		
Section 27		
Section 28		
Section 29		

T 14 N - R 21 E  
Section 01  
202-27-001a  
202-27-001b



For additional information or questions contact

Rulon Anderson  
[rulon@realandconsulting.com](mailto:rulon@realandconsulting.com)  
602-321-4903

7 2 7 2 E I N D I A N S C H O O L R D  
S U I T E N U M B E R 4 7 2  
S C O T T S D A L E A R I Z O N A 8 5 2 5 1



W W W . E S P I R I T U L O C I . C O M  
P H O N E 4 8 0 - 4 8 1 - 9 1 0 0  
F A X 4 8 0 - 4 8 1 - 9 1 0 1

The drawings and information depicted hereon are conceptual only and are not intended to represent final architecture, planning, or design concepts. We do not represent, warrant, or guarantee that such information is true or that it accurately reflects existing or future development. Drawings and Specifications as instruments of service are the property of the Espiritu Loci Incorporated and may not be reproduced or used for any purpose without the written permission of Espiritu Loci Incorporated.